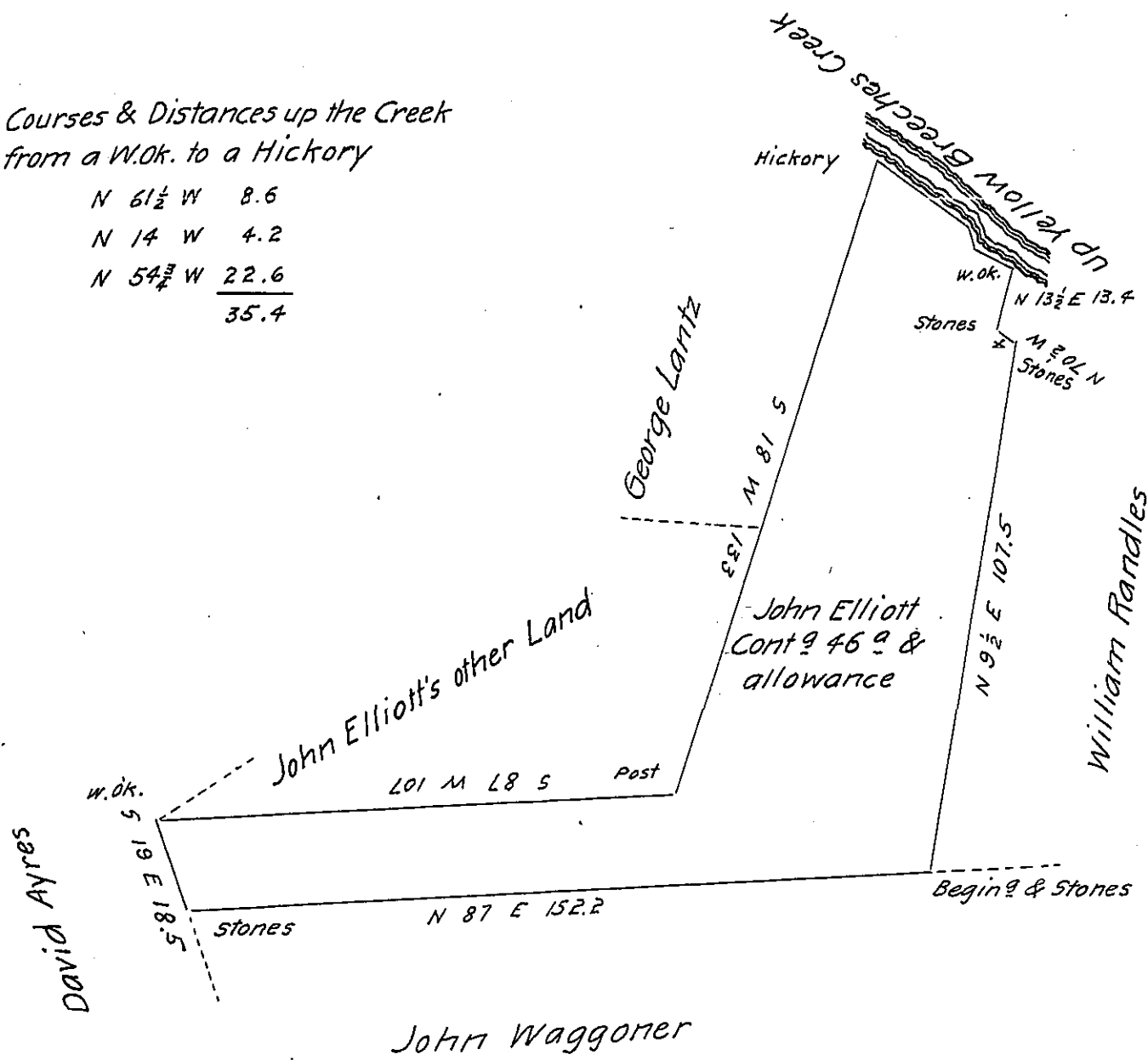


Courses & Distances up the Creek
from a W.Ok. to a Hickory

N 61½ W 8.6
N 14 W 4.2
N 54¾ W 22.6
35.4



Situate in Monaghan Township in the County of York containing as above set forth 46⁹ & the usual allowance of 6 per cent for roads &c. Surveyed the 7th day of March 1816. In pursuance of warrant for 48⁹ granted to John Elliott bearing date the 27th day of February 1816.

N.B. The Improvements on the above described tract of land at the time of surveying were two dwelling houses one barn & some cleared fields &c. made prior to the 28th of March 1814. Rendering it an actual personal resident settlement with a manifest intention of making it a place of abode & means of supporting a family.

To } Per
Richard T. Leech Esq^r } Jacob Spangler D.S.
Surveyor General }
Harrisburg Pa }

IN TESTIMONY that the above is a copy of the original remaining on file in the Department of Internal Affairs of Pennsylvania, made conformably to an Act of Assembly approved the 16th day of February, 1833, I have hereunto set my Hand and caused the Seal of said Department to be affixed at Harrisburg, this sixteenth day of November 1904

Loac R Brown
Secretary of Internal Affairs.